

## WinTouch Flashing Guide

Download necessary files, and make sure that your device has enough power. This guide will help you to upgrade your ROM version, all user data will be cleared in the process.

### STEP 1

Download 3 necessary files to your computer.

①Download **【MT65xx\_Rom\_Flashing\_Drive.zip】** to your desktop

<http://d.wintouch.cc/software/M501/MTK65xxDriver.rar>

②Download **【MTK\_Rom\_Flashing\_Tools.zip】** to your desktop

[http://d.wintouch.cc/software/M501/SP\\_Flash\\_Tool\\_exe\\_Windows\\_v5.1436.00.000.zip](http://d.wintouch.cc/software/M501/SP_Flash_Tool_exe_Windows_v5.1436.00.000.zip)

③Choose the model and download Wintouch ROM to D disk

<http://www.wintouch.ae/download/>

If you have downloaded the latest installation pack, there is no need to download it again.

### STEP 2

1. Unzip **【MT65xx\_Rom\_Flashing\_Drive】** to your desktop.

2. Open the folder and double click **【double click me to install Rom Flashing Drive.bat】** to install Rom Flashing Drive.

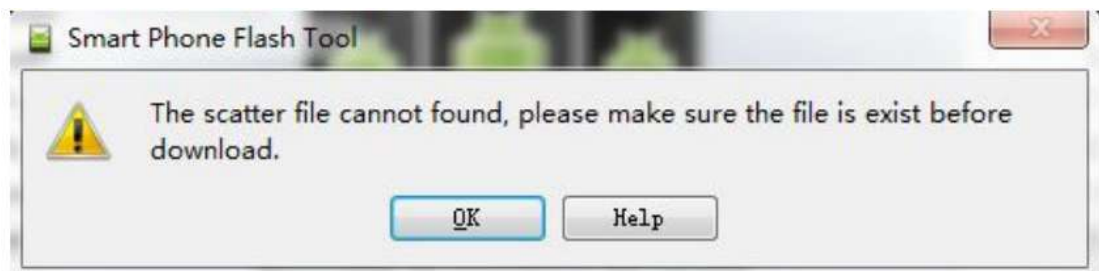
3. Then a success message will show and you can close the window.

### STEP 3

1. First unzip the ROM file to D disk.

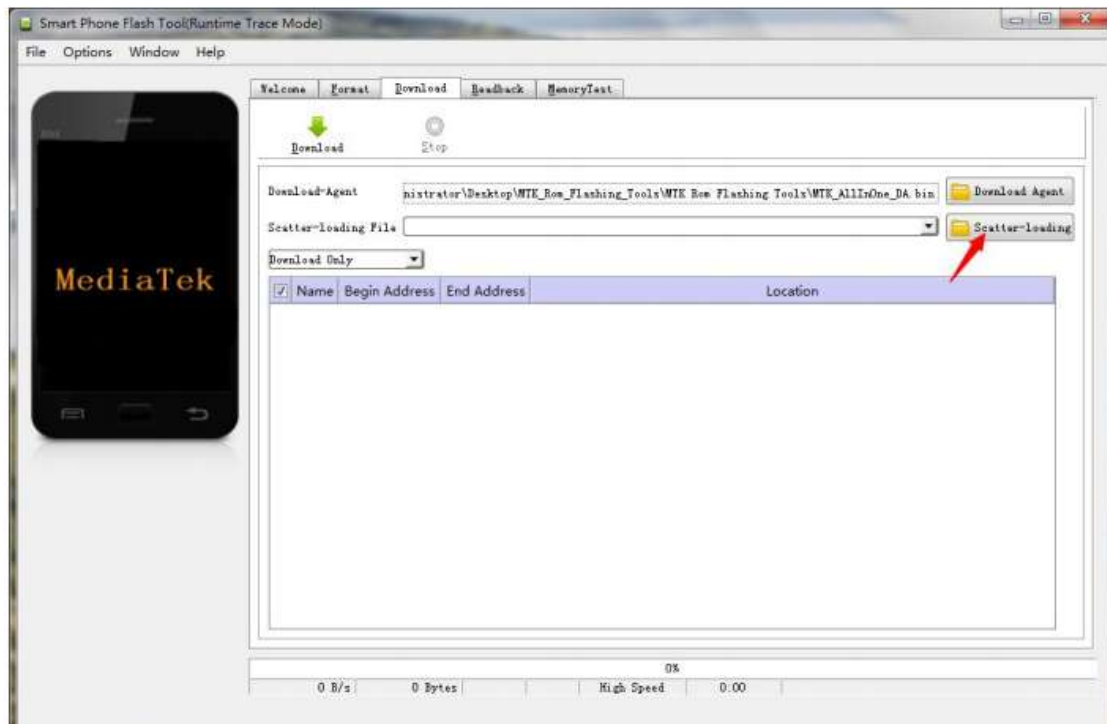
2. Then unzip **【MTK\_Rom\_Flashing\_Tools.zip】** to your desktop.

3. Open the folder **【MTK\_Rom\_Flashing\_Tools】** and double click **【flash\_tool.exe】**, click 'OK' when the alert shows.



4. Click **【Scatter-loading】** button on the right.

As the picture shows :



5. Choose **【MT65xx\_Android\_scatter.txt】** from your ROM file folder(which you unzipped in Step3.1) and click ‘Open’ button.

6. Choose **【Firmware Upgrade】** model.

**【Notice:** Don’t choose ‘ Format ALL + Download ’ model, or you will lose your IMEI number!**】**

7. Click **【Download】** button

8. Then turn off your device, take out the battery, and insert it again. Then connect the device to a computer.

9. After connecting to the computer, your device will start flashing automatically.

10. Then wait for several minutes until a successful prompt shows which means the ROM is successfully flashed.

11. Disconnect your device , take out the battery and insert it again. Now you can reboot your device, and it will take several minutes.